

Rausch mobile

Efficient inspection

FullHD
1920 x 1080



rausch

Compact Flexible Mobile



Application range 4" - 118 Inches

The Rausch-Tab is the new control unit for Cubix 300 and Omicon and the mobile solution for main lines and lateral inspection in full-HD.



+ Ex-protection option 

→ Rausch-Tab

- 12.1" touch screen display
- Integrated PC
- Operating system: Windows 10
- Multifunctional joysticks
- Easy to remove for office work
- Standard basic software for image, video and PDF creation
- Expandable to fully integrate with 3rd party inspection software

- Bracket for mounting on the cable drum Cubix 300 or vehicle installations
- Wi-Fi capable, LAN capable, USB, HDMI
- Determining the diameter
- Inclination, temperature and laser measurements with internal PC
- Deformation measurement across the entire reach
- Dimension: 16" x 10" Inches
- Type of protection: IP 52

→ Cubix 300

Electric cable drum with up to 1,000 ft camera cable

- Control panel with status display
- Membrane keys for back area operation
- Integrated carrying handles
- Electrical brake function
- Manual brake
- Unwind aid with cross guide spindle and folding arm for optimum cable routing
- Radio remote control (optional)
- 100 - 250 V AC (50/60 Hz), max. 600 W
- Dimension: 17" x 17" x 19" Inches
- Weight: 67 kg inc. 300 m cable



→ Vehicle upgrade



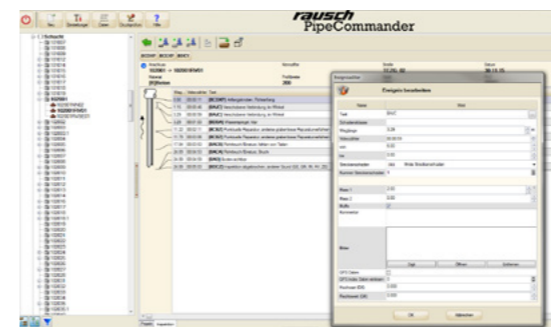
Studio

- Rausch-Tab
 - LED lighting
 - Charging over the standard alternator
 - Power supply with lithium-ion batteries
- (Studio design may vary depending on vehicle model and specs selected)

Rear area

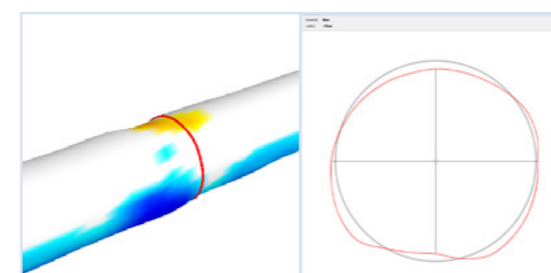
- Finishing with high-quality aluminum profiles and pull-outs for crawlers and accessories
- Rear monitor
- Folding rain and sun protection canopy
- Swivel arm with winch and LED worklight
- Water tank for cleaning work
- Cable drum Cubix 300
- 1,000 ft camera cable
- Deflection pulley

→ Software



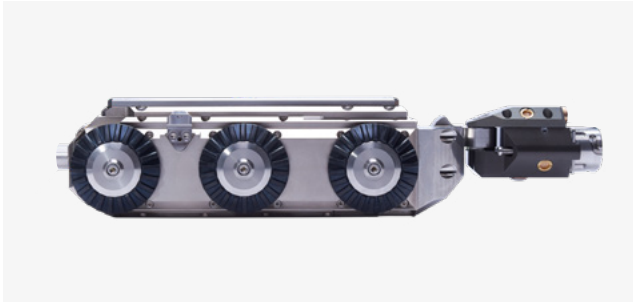
All projects are managed in a clear menu structure and can be exported at any time. Inspection results can be retrieved in the form of videos, photos, logs and statistics. System compatible with 3rd party inspection software, contact RauschUSA for further details.

→ Deformation measurement



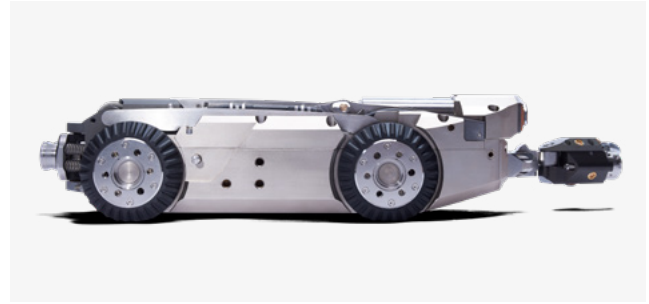
Our main-sewer inspection cameras have other talents, too: Equipped with an optionally available scanning function, they detect even the smallest deformations in main lines using 2-point precision lasers and measure them precisely – both point by point and across the entire reach. Due to the 3D display of the pipe, deformations can be determined perfectly.

Crawler



Crawler C 90

- 4" – 24" Inches
- 3 drive axles
- Manual and automatic steering function
- Continuously adjustable automatic reversing mechanism
- 30° bends from 6" inches
- Camera quick connect
- Mechanical camera high adjustment
- Electric lifting gear
- Rear view camera
- Tilt sensor
- Temperature measurement



Crawler C 135

- 5.5" – 63" inches
- Crawler extension (Lafette) for up to 118" inches
- Manual and automatic steering function
- Continuously adjustable automatic reversing mechanism
- Camera quick connect
- Electric lifting gear
- Rear view camera
- Tilt sensor
- Permanent pressure monitor
- Temperature measurement

Cameras



Camera KS 40

- From 3" inches
- Resolution: over 420 TV lines
- 90° bends from 3.5" inches
- Attachable pin
- 33 kHz and 512 Hz locating
- Robust lens module without moving parts = Liquid lens
- 2 laser diodes for precise measurement
- Manual and automatic focus
- Integrated 3D sensor



Camera KS 60 SD / HD

- From 4" inches
- Pan and tilt head camera
- Resolution SD: over 530 TV lines
- Resolution HD: 1920 x 1080 px
- Manual and automatic focus
- 2 laser diodes for precise measurement
- Multiple zoom
- 33 kHz and 512 Hz locating
- Integrated 3D sensor



Camera KS 135 SD / HD

- From 5.5" inches
- Pan and tilt head camera
- Resolution SD: over 530 TV lines
- Resolution HD: 1920 x 1080 px
- 2 laser diodes for precise measurement
- 10x optical and 12x digital zoom
- Wireless additional lighting
- Variable circling speed from 2 – 75 rpm
- Lens with auto aperture, auto focus and manual focus