



Hydrostatic drive 2,200 gallon stainless steel flusher with sidewalk flusher, OMCO deicer with raven controls, monitor, gravity bar, rear spray heads, hose reel and quick change suction hose



Hydrostatic powered OMCO 2,500 gallon stainless steel tank flusher / deicer with Robo Flush™. OMCO deicer system with Force America control system



Hydrostatic powered OMCO 6,000 gallon stainless steel tank , 40' semi trailer. Self priming water pump, flusher, deluge, spray heads, hose reel, gravity bar, fire discharge and deicer capabilities. Just to name a few.



**HF 400 SERIES
WATERMASTER™**

**HIGH PERFORMANCE TANKERS
WITH STREET FLUSHER CAPABILITIES**



3,500 gallon stainless steel flusher



Robo Flush™ in operation

HYDROSTATICALLY POWERED



4,000 gal. stainless steel flusher with monitors

P.O. Box 66 • Prineville, Oregon 97754 U.S.A.
PLANT LOCATION
 2668 NE. Third • Prineville, OR. 97754 • PHONE • (541) 447 – 5502 • FAX • (541) 447 – 6987
 E – Mail • omcomfg@omco-mfg.com • or visit our website • www.omco-mfg.com



LOOK AT THE CHOICE'S YOU NOW HAVE IN SELECTING YOUR NEXT TANKER.

- A) HYDROSTATIC TRANSMISSION
- B) ROBO-FLUSH™ (OPTION)
- C) FRONT FLUSHER ASSEMBLY
- D) LEFT SIDE DELUGE (OPTIONAL)
- E) WATER PUMP
- F) MIDSHIP FLUSHER
- G) SUCTION HOSE STORAGE (OPTIONAL)

- H) HOSE REEL (OPTIONAL)
- I) RODDER REEL (OPTIONAL)
- J) STANDARD REAR LADDER
- K) ANTI-ICER SYSTEM (OPTIONAL)
- L) REAR BUMPER ASSEMBLY
- M) 4" GRAVITY BAR (OPTIONAL)
- N) HYDRANT FILL ASSEMBLY

- O) TOOL COMPARTMENT (OPTIONAL)
- P) HOSE REEL (OPTIONAL)
- Q) MIDSHIP FLUSHER
- R) RIGHT SIDE DELUGE (OPTIONAL)
- S) OPERATORS CONSOLE
- T) HYDRAULIC RESERVOIR
- U) FRONT SWEEP ASSEMBLY (OPTIONAL)

STEP UP TO OMCO TECHNOLOGY AND DEMAND A REAL TOOL!

Unequaled Controllability in Flushing Direction and Water Pressures.

Mild Steel or T-304 Stainless Steel.

Elliptical tank design with 5" domed heads and baffles. These features insure curvature movement of water with less than full loads, making your tanker much **safer** while traveling. Truck tanks range from 2,000 gal. to 3,800 gal. Trailers are 6,000 gal.

Danfoss Series 90

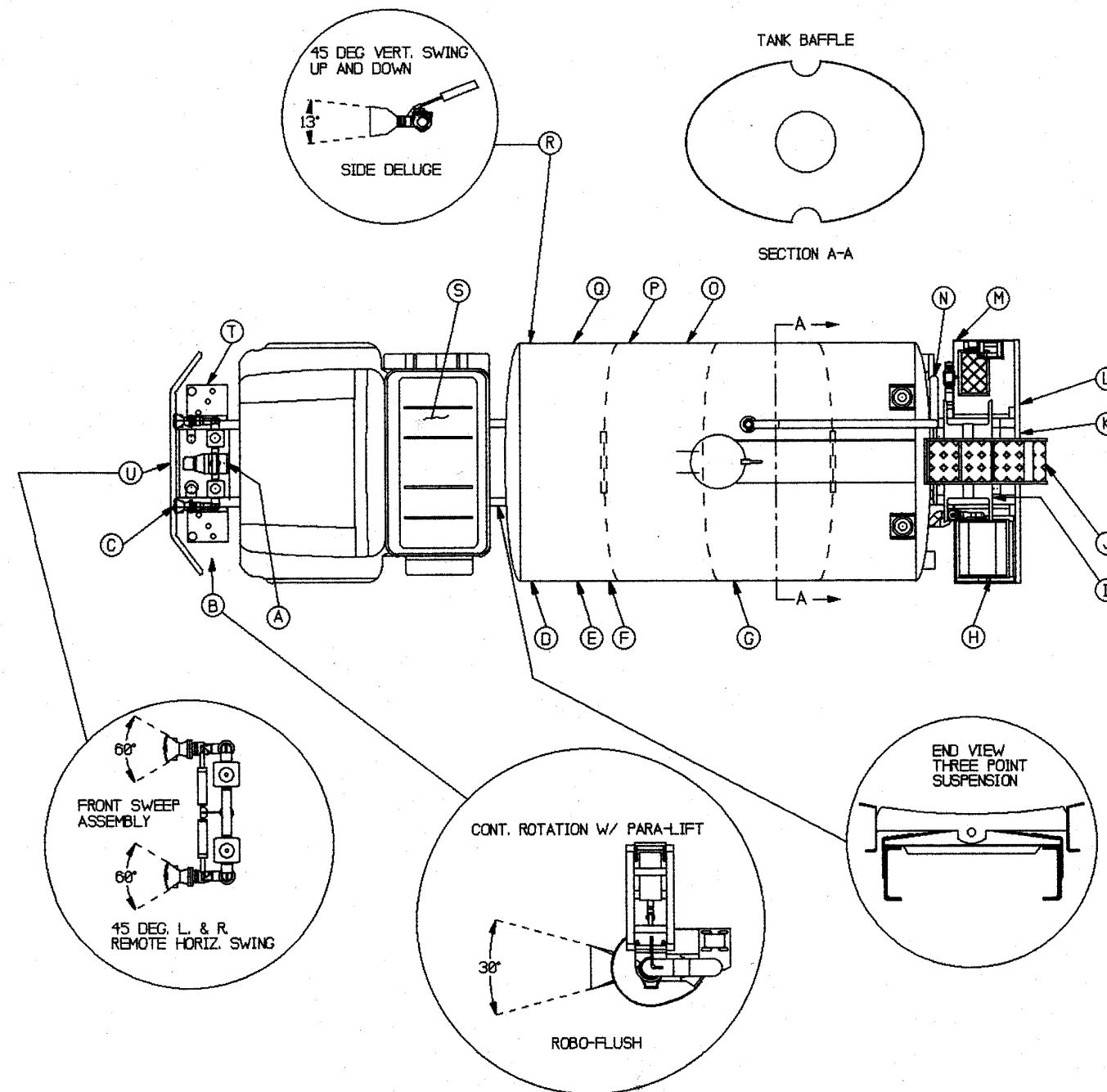
Closed loop hydrostatic transmission powered 850 G.P.M. centrifugal water pump with full performance attainable at **no** more than 900 engine R.P.M.

Choice of Computer or Pressure Override (P.O.R) control.

Electronic controlled system allows a pre-selection of flusher pressures using the hydrostatic quadrant throttle. Water pressure will remain stable at 900 engine R.P.M. and above with any **combination** of heads turned on or off, regardless of road speed.

Hydraulic P.O.R. over speed control allowing stable "full performance" pressure from 900 engine R.P.M. though governed engine speed

Water pump performance up to 600 G.P.M. @ 100 P.S.I.



Front Flusher Nozzles

Can be equipped with individual horizontal swing feature controls. The operator can move either nozzle 45° left or right from straight ahead position.

OMCO's Exclusive ROBO-FLUSH™ with PARA-LIFT™

Front corner mounted, narrow pattern, high pressure nozzle can be rotated remotely on a continuous horizontal plane. It can also be adjusted in height from 7" to 17" above ground level. This feature allows flushing of bridge curbs with different heights, cul-de-sacs, under parked vehicles, etc. The majority of your flushing requirements can be achieved with the ROBO-FLUSH™ alone, performing more lane mile work with less water usage. **TRY IT YOU WILL LIKE IT!**

OMCO's Side Mounted Deluge Water Heads

Equipped with narrow pattern nozzles and when combined with the high pressure performance standard on our systems, you will find it is easy to remove winter sanding debris, etc. from your bridge decks, under guard rails, and all roadside areas. These heads are designed with a vertical remote movement of 45° below horizon to 45° above horizon and will hold in any position between.

XHD three point suspension option will extend your tank warranty to 5 years.

The HF400 series spec. sheet is a serious spec. insuring excellent performance and controllability. Ask for your copy today.