

Portable.
Powerful.
Professional.



MOBILE pro

Robust design in a portable package.

Application range from 4" up to 78" pipe diameter

rausch USA
www.rauschusa.com

MOBILE pro

www.rauschusa.com

Application range from 4" up to 78" pipe diameter

MOBILE pro control unit has a built-in 12" LCD monitor and digital video recorder. The crawler & camera are controlled via 2 multifunction joysticks.

Features

- 7" touch display for system status and settings and built-in keyboard
- SD-Card slot for video and photo recording
- USB Port for macro and overlay control via external PC
- Swivel mount to cable drum Cubix 300
- Video output for external devices
- Locating sonde control for camera/crawler systems
- Dimensions: 16.5" x 12.6" x 6.25"

MOBILE pro is able to record inclination, temperature values, and laser crack measurements when it is connected with a PC.



Cubix 300 Motorized Cable Drum with 1,000' of .303" cable

- LCD display for distance counter and status display
- Two integrated carrying handles for mobile applications
- Electronic brake and cross-lead spindle for cable winding
- Slip ring connection for rapid cable change
- Fully synchronized to the camera/tractor unit

Technical Data

- Power Supply 100-250V AC (50/60 Hz)
- Power consumption max. 200W
- Dimensions: 16.75" L x 16.75" W x 18.9" H
- Weight: 110 lbs. including 1,000 feet of cable



C 135 + KS 135 C

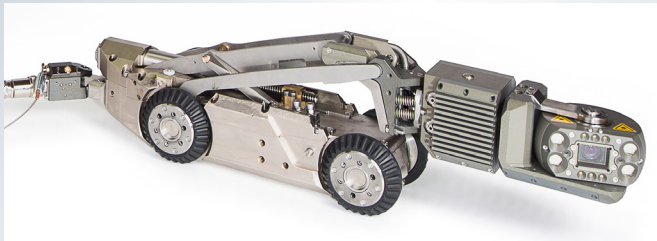
C 135 Crawler - 6"-78" pipe diameter

- Steerable 4-wheel drive
- Electric lift with reverse camera
- Dual axis inclination sensor*
- Reverse sensor synchronized with cable reel

KS 135 C Camera

- 280° pan, infinite 360° rotation
- 10X optical zoom, manual & auto focus control
- Four long-range LEDs and 6 short-range LEDs
- Laser crack measurement*

* Requires PC with compatible inspection software



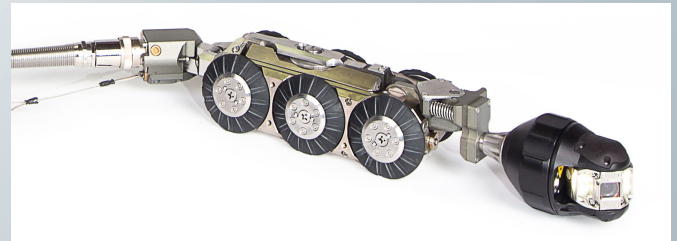
C 100 + KS 60 DB

C 100 Crawler - 4"-20" pipe diameter

- Automatic and manual steering function
- Mechanical height adjustment of camera
- Dual-axis inclination sensor*
- Reverse sensor synchronized with cable reel

KS 60 DB Camera

- Pan and tilt camera with infinite rotation
- Dual camera zoom, manual & auto focus control
- Distortion-free wide angle lens
- Laser crack measurement*



www.rauschusa.com

Phone: 717 709 1005

Toll Free: 877 Rauschl

Email: reusa@rauschusa.com

rausch USA