



StetcoTM



Catch Basin Cleaners

920T/14 • 950T/13 • 970T2/15



Innovating the Industry for More Than 50 Years

Intelligent Solutions for Today's Municipalities

Value That Lasts Job After Job

Stetco Products

The World Leader in Catch Basin Cleaning Systems

A Better Way To Do The Job

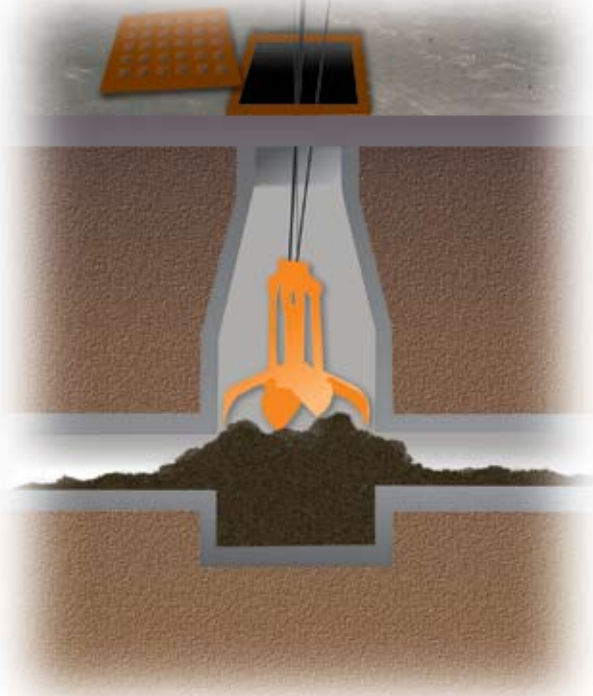
From municipalities in hot climates to cities throughout the Snow Belt, Stetco catch basin cleaners (CBCs) are used on a worldwide basis for a variety of applications, including drainage infrastructure maintenance, lift stations, water treatment plant grit chambers, pump stations, and more.

Stetco is an excellent stand-alone product and the perfect complement to vacuum systems. As a stand-alone, Stetco offers specific advantages that vacuum systems can't match, including:

- Cost-effective way to meet EPA Phase II stormwater mandates.
- Fast setup — just park the truck and swing the boom over the hole.
- Fast debris removal — Stetco buckets make serious volume removal a snap.
- Fewer trips to the dump — Stetco buckets squeeze out liquids as they close, allowing the removal of debris without large quantities of liquids.
- Ability to lift and load debris without adding water.
- Easy removal of heavy, unwieldy material that would slow down, clog, or damage vacuum trucks.
- Ability to work in frozen and snowy conditions.
- Less maintenance and labor than vacuum systems.
- Optimal high-pressure JetPac system to clean laterals.



Stetco offers low-maintenance, reliable designs that can be custom-built to your specifications or fitted to an existing chassis from your fleet. No wonder Stetco is your heavy-duty solution to catch basin cleaning.





Stetco buckets allow high-volume debris removal in minimum time.

From orange peel buckets to rectangular or round clamshell buckets, there is a range of models and sizes to accommodate different catch basin dimensions. All Stetco buckets hydraulically squeeze debris to remove unwanted liquid — which means you haul only the debris, not the liquid.



The versatility of a Stetco unit is perfect for smaller municipalities on a tight budget.

In addition to cleaning catch basins, a Stetco unit can act as a dump truck and can be outfitted to double as a snowplow and road sander for work during the winter months. An optional hydraulic tool interface allows you to operate tools like sump pumps, paving breakers, and chainsaws at the job site.



Quiet operation allows you to work in urban environments without bothering bystanders or residents.

A watertight debris container with full-perimeter splash guard stores 7 cu yd (5.4 m³) of material on a single-axle chassis. Quick setup and a stowable boom allow you to move from job to job quickly and efficiently.



The Stetco combo unit adds our optional JetPac system for the complete cleaning solution.

JETPAC 2000 System

The high-pressure, low-volume JetPac allows you to jet lateral lines up to 18" (46 cm) in diameter. A rugged performer, the pump can be run dry without damage; a recirculation option allows operation in subfreezing temperatures.



Specifications

General	920T/14	950T/13	970T2/15
Clear mounting space behind cab	36" (91 cm)	36" (91 cm)	36" (91 cm)
Std. travel height w/ hose reel (approx.)	11' 2" (3.4 m)	10' 7" (3.23 m)	11' (3.35 m)
Aboveground lift height (std.)	21' (6.4 m) max.	21' (6.4 m) max.	21' (6.4 m) max.
Reach below ground (std.)	35' (10.6 m)	35' (10.6 m)	35' (10.6 m)
Installed weight (approx.)	3,000 lb (1,361 kg)	3,700 lb (1,678 kg)	3,900 lb (1,769 kg)
Rotation (std.)	200° or 370°	200° or 370°	200° or 370°
Lifting capacities (w/ boom)	2,000 lb (907 kg) @ 14' (4.3 m); 5,700 lb (2,586 kg) @ 5' (1.5 m)	2,850 lb (1,293 kg) @ 13' (4.0 m); 8,260 lb (3,746 kg) @ 5' (1.5 m)	2,250 lb (1,021 kg) @ 15' (4.6 m); 8,250 lb (3,742 kg) @ 5' (1.5 m)
Winch lifting capacity (full drum)	2,000 lb (907 kg)	2,000 lb (907 kg)	2,000 lb (907 kg)
Winch line speed	200 fpm (60.9 m/min.)	250 fpm (76.2 m/min.)	250 fpm (76.2 m/min.)
Working pressure	2,050 psi (141 bar)	2,050 psi (141 bar)	2,050 psi (141 bar)
Typical pump capacity	13 gpm (49 L/min)	13 gpm (49 L/min)	13 gpm (49 L/min)
Tank capacity	37 gal (140 L)	37 gal (140 L)	37 gal (140 L)
Retracted boom length	8' (2.44 m)	8' (2.44 m)	7' (2.13 m)
Extended hydraulic boom length	14' (4.3 m)	13.5' (4.1 m)	15' (4.6 m)
Minimum Truck Specifications			
GVWR	33,000 lb (14,969 kg); 35,000 lb (15,876 kg) w/ JetPac	33,000 lb (14,969 kg); 35,000 lb (15,876 kg) w/ JetPac	33,000 lb (14,969 kg); 35,000 lb (15,876 kg) w/ JetPac
Front axle	12,000 lb (5,443 kg)	12,000 lb (5,443 kg)	12,000 lb (5,443 kg)
Rear axle	21,000 lb (9,526 kg); 23,000 lb (10,433 kg) w/ JetPac	21,000 lb (9,526 kg); 23,000 lb (10,433 kg) w/ JetPac	21,000 lb (9,526 kg); 23,000 lb (10,433 kg) w/ JetPac
Cab to axle	108" (274 cm) for CBC with 10' (3 m) body. 120" (305 cm) for CBC with JetPac and 8' (2.44 m) body	108" (274 cm) for CBC with 10' (3 m) body. 120" (305 cm) for CBC with JetPac and 8' (2.44 m) body	108" (274 cm) for CBC with 10' (3 m) body. 120" (305 cm) for CBC with JetPac and 8' (2.44 m) body
Min. RBM	1,650,000	1,650,000	1,650,000

Available Options Include: manual boom extensions, outriggers, remote control, deep digger equipment for 50' or 75' (15.2 m or 22.9 m) operation, Stetco hydraulic tool interface and hose reel, high-pressure water jetting, front-mounted boom rest for use w/ 370° swing, tool boxes, debris bodies per customer specifications and bucket baskets.





Founding an Industry

From international markets and major cities like New York, Chicago, Philadelphia, and Boston, to small municipalities around the country, Stetco™ hydraulic catch basin cleaners (CBCs) provide a cost-effective, year-round solution to heavy-duty catch basin cleaning.

Founded in 1952, Stetco pioneered CBC development and innovated the way catch basin cleaning was performed. Today, newer, refined Stetco CBC technology offers the most productive method of cleaning catch basins.

Stetco has wrapped more than 50 years of experience into its newest, state-of-the-art CBC units: the 920T/14, the 950T/13, and the heavy-duty 970T2/15. Stetco is the originator and innovator of this class of equipment — there's nothing else like a Stetco CBC!

1952



Orange Peel



Rectangular Clamshell



Round Clamshell

Stetco Bucket Specifications

Model	Orange Peel (Long Blade)					Rectangular Clamshell		Round Clamshell	
Outside size	13.5" (34 cm)	15" (38 cm)	15" (38 cm)	18" (46 cm)	24" (61 cm)	12" x 17" (30 cm x 43 cm)	20" x 24" (51 cm x 61 cm)	10.75" (27.3 cm)	12.75" (32.4 cm)
Max. blade opening	33" (84 cm)	36" (91 cm)	43" (109 cm)	40" (102 cm)	48" (122 cm)	30" (76 cm)	35" (89 cm)	36" (91 cm)	34" (86 cm)
Closed height	47" (119 cm)	48" (122 cm)	53" (135 cm)	48" (122 cm)	57" (145 cm)	46" (117 cm)	51" (130 cm)	51" (130 cm)	51" (130 cm)
Open height	43" (109 cm)	44" (112 cm)	48" (122 cm)	43" (109 cm)	51" (130 cm)	44" (112 cm)	48" (122 cm)	45" (114 cm)	45" (114 cm)
Volume capacity	1.0 cu ft (.028 m ³)	1.3 cu ft (.037 m ³)	1.8 cu ft (.051 m ³)	2.0 cu ft (.057 m ³)	3.0 cu ft (.085 m ³)	2.0 cu ft (.057 m ³)	4.0 cu ft (.113 m ³)	.8 cu ft (.023 m ³)	1.0 cu ft (.028 m ³)
Weight (empty)	255 lb (116 kg)	265 lb (120 kg)	280 lb (127 kg)	285 lb (129 kg)	350 lb (159 kg)	285 lb (129 kg)	350 lb (159 kg)	210 lb (95 kg)	250 lb (113 kg)

Ask about other custom sizes.



Stetco Products

A Division of Iowa Mold Tooling Co., Inc.
27 Washington Street
Westborough, MA 01581-1052

Phone: (508) 366-9151

Fax: (508) 870-1731

www.stetcoproducts.com

Design and specifications are subject to change without notice.
STETCO is a trademark of Stedt Hydraulic Crane, a division of Iowa Mold Tooling, in the U.S. and/or other countries.
© 2003 Stetco Products. All Rights Reserved